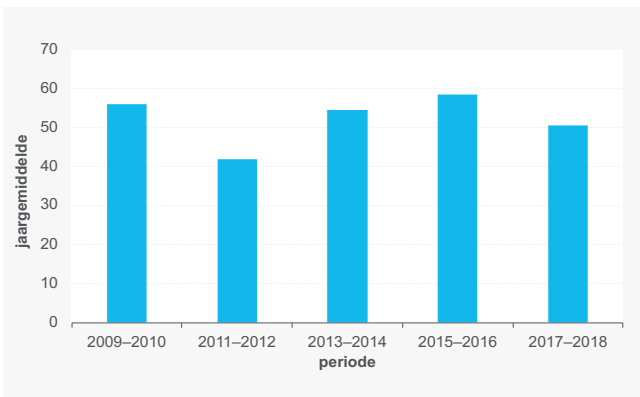
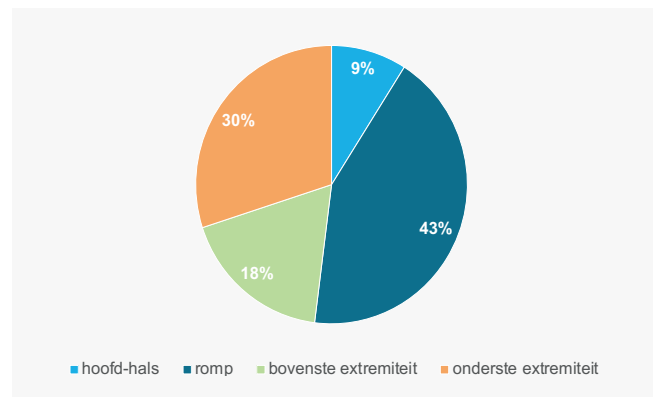


## HOOGGRADIG CHONDROSARCOOM

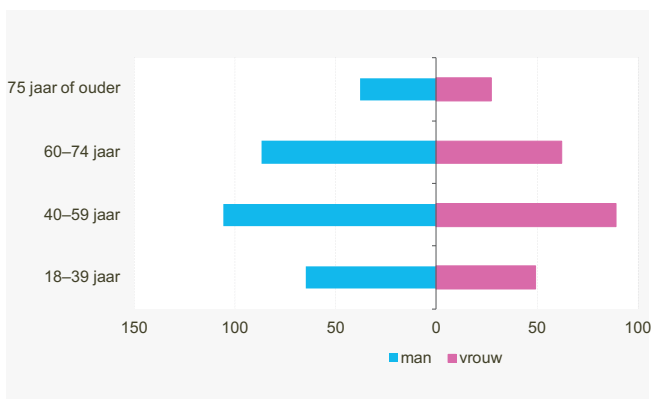
### nieuwe diagnoses



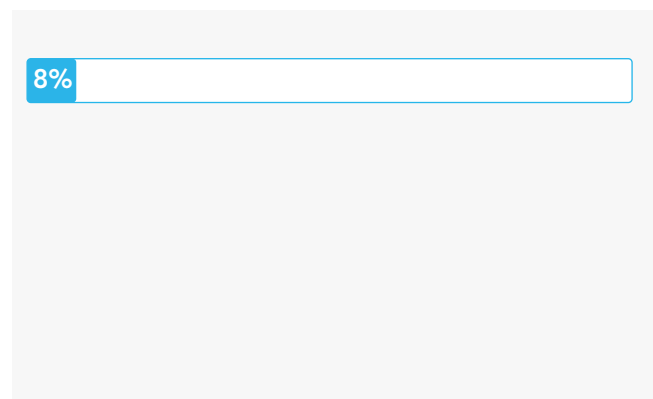
### lokalisatie



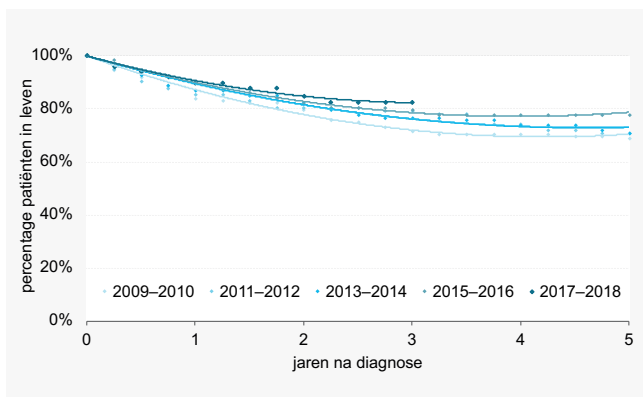
### leeftijdsverdeling per geslacht



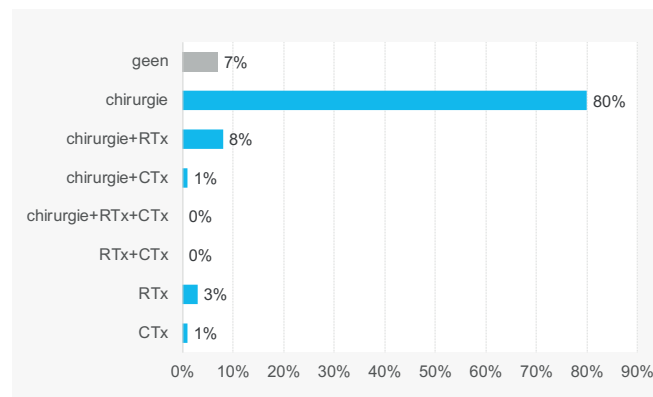
### uitgezaaide ziekte bij diagnose



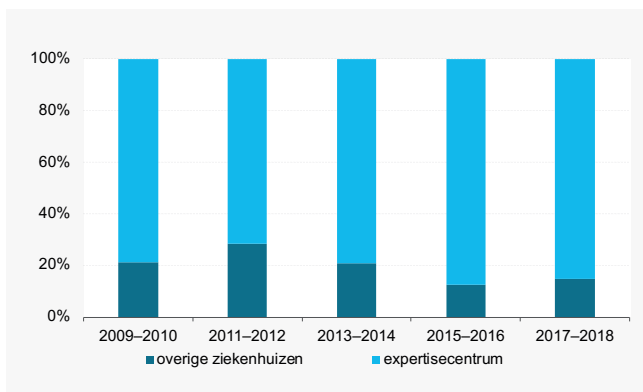
### overleving



### primaire behandeling



### operatie in expertisecentrum

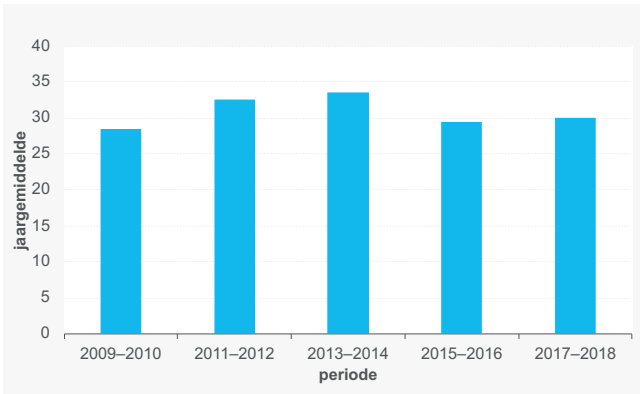


### chirurgie per ziekenhuis

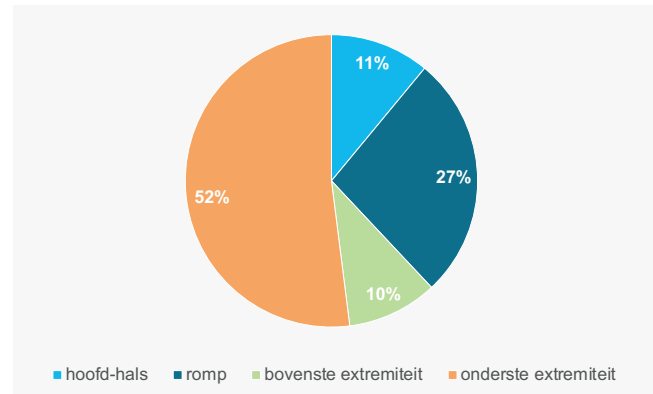


## HOOGGRADIG OSTEOSARCOOM

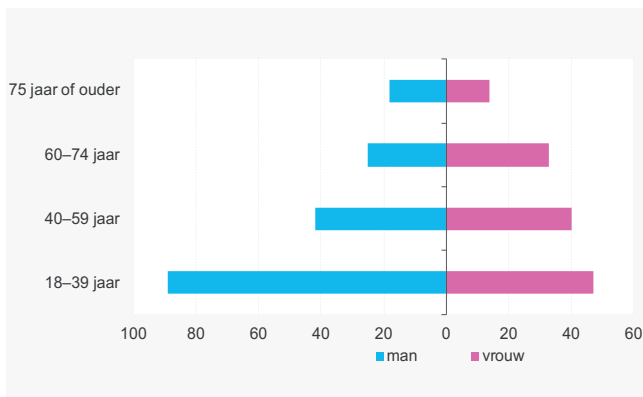
### nieuwe diagnoses



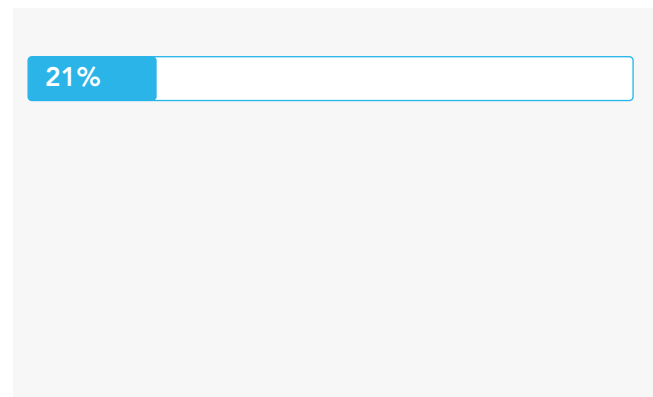
### lokalisatie



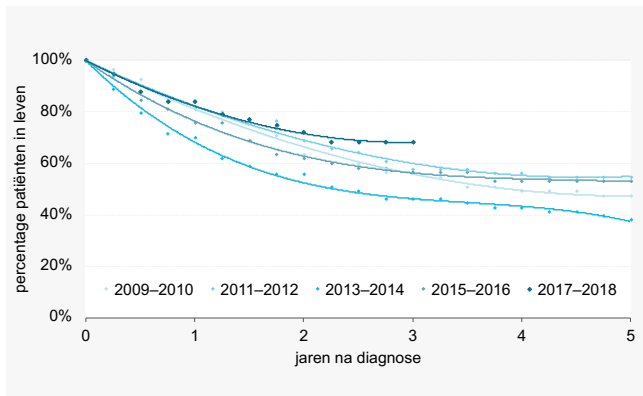
### leeftijdsverdeling per geslacht



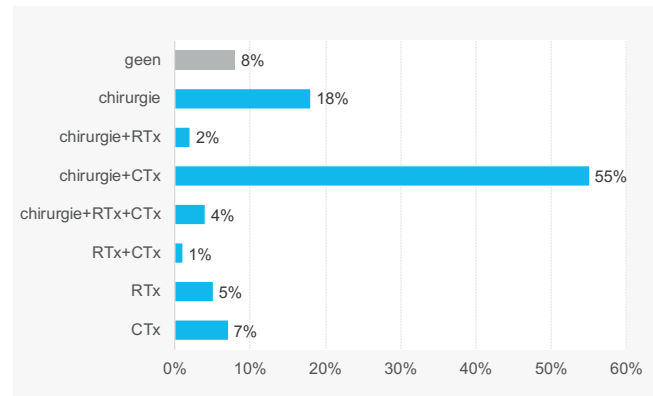
### uitgezaaide ziekte bij diagnose



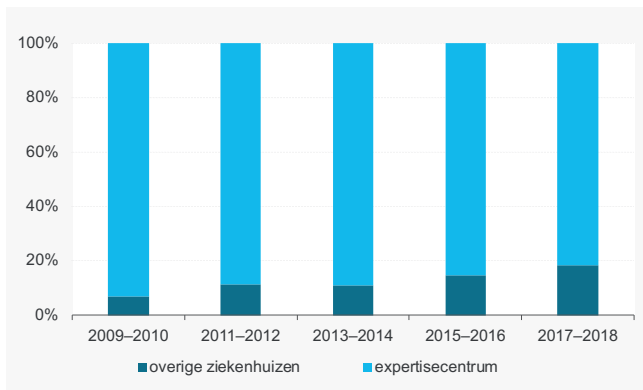
### overleving



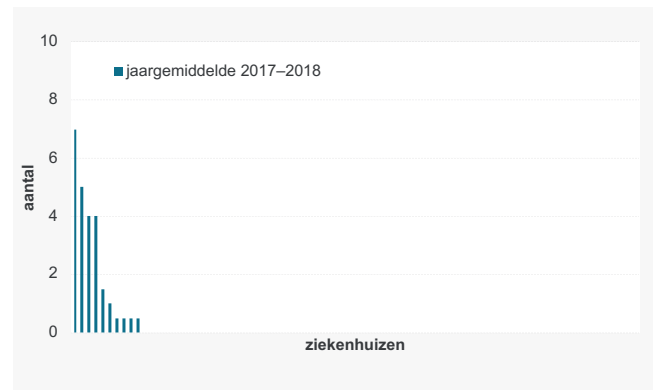
### primaire behandeling



### operatie in expertisecentrum

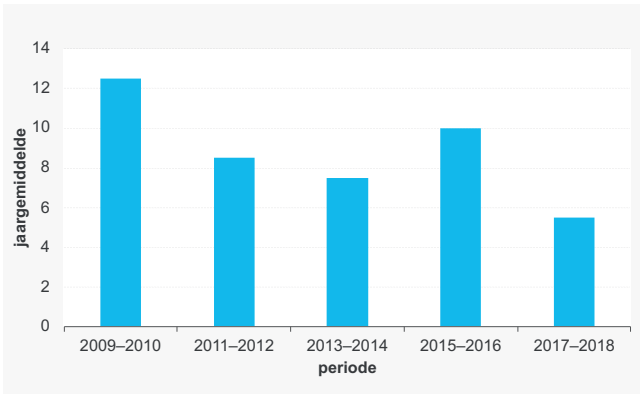


### chirurgie per ziekenhuis

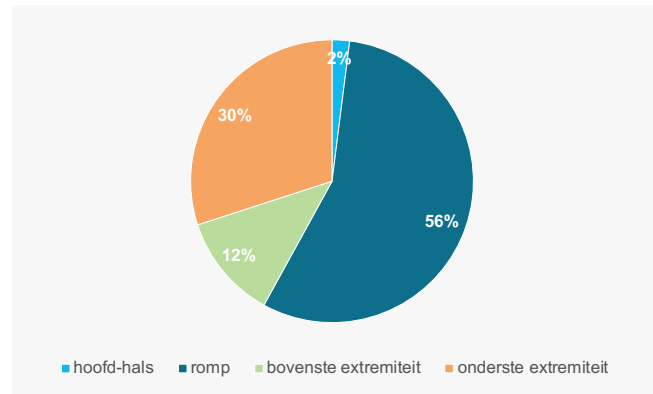


## EWING-SARCOOM

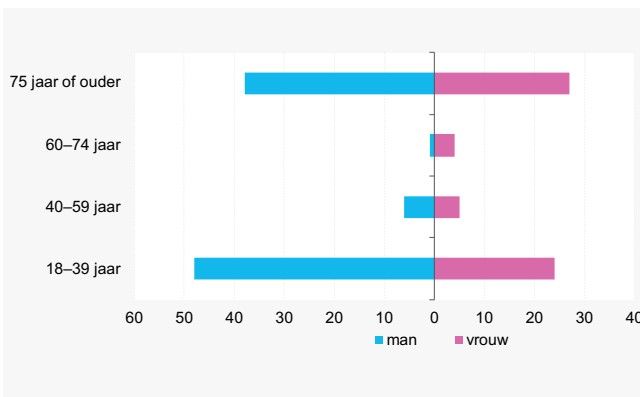
### nieuwe diagnoses



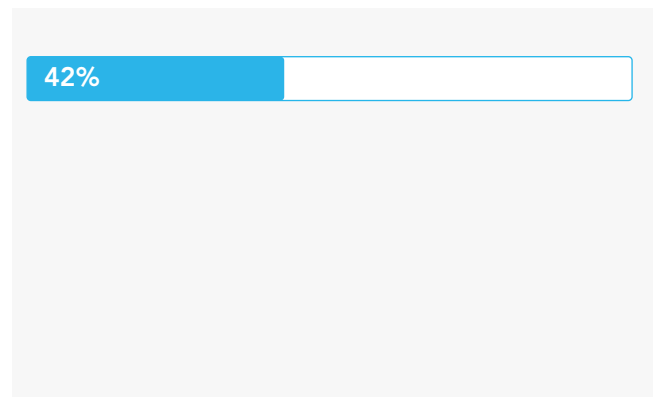
### lokalisatie



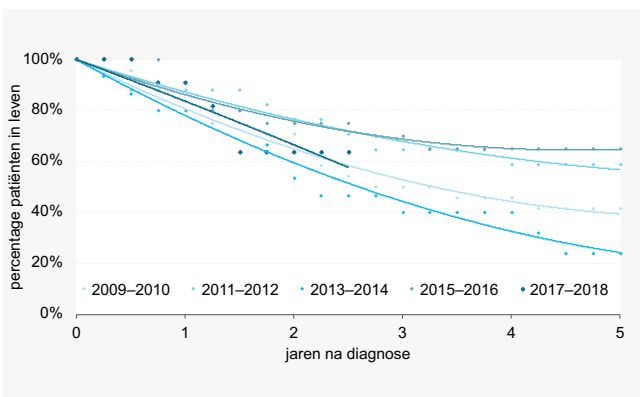
### leeftijdsverdeling per geslacht



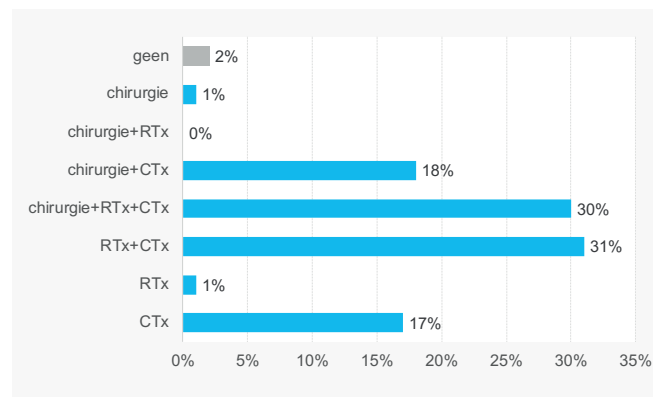
### uitgezaaide ziekte bij diagnose



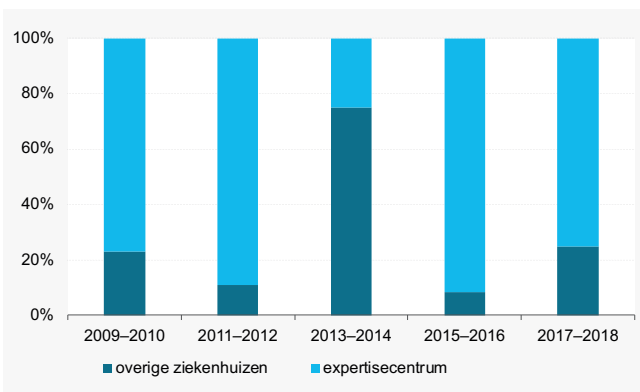
### overleving



### primaire behandeling



### operatie in expertisecentrum

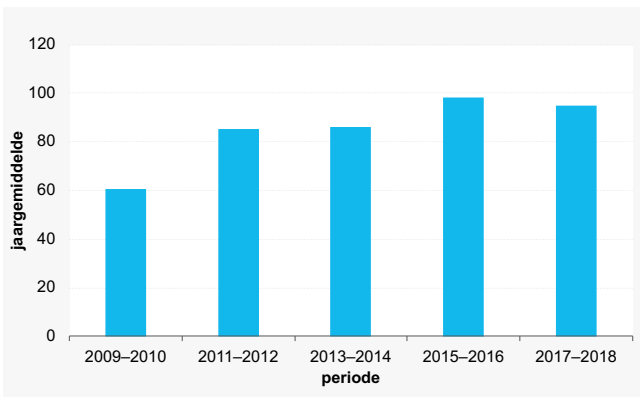


### chirurgie per ziekenhuis

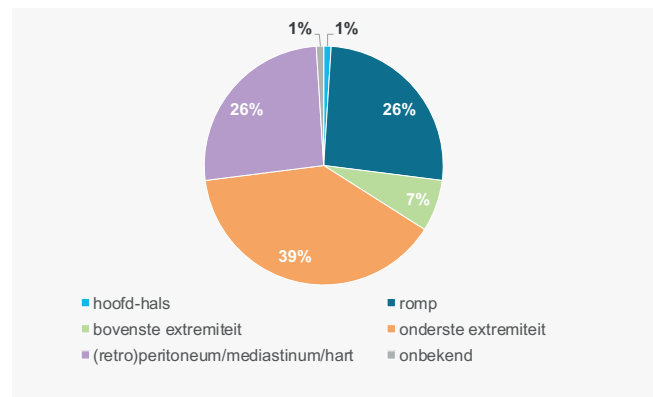


## HOOGGRADIG LIPOSARCOOM

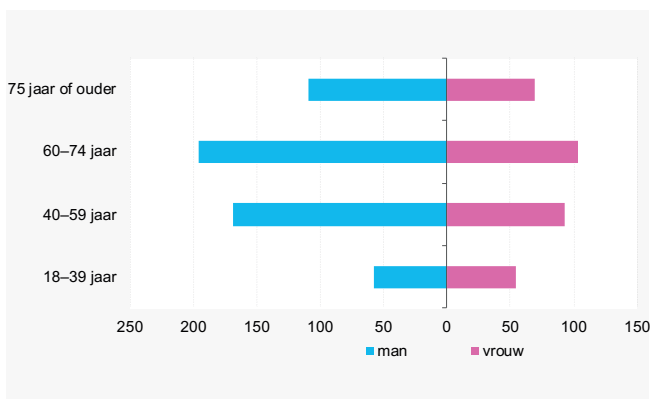
### nieuwe diagnoses



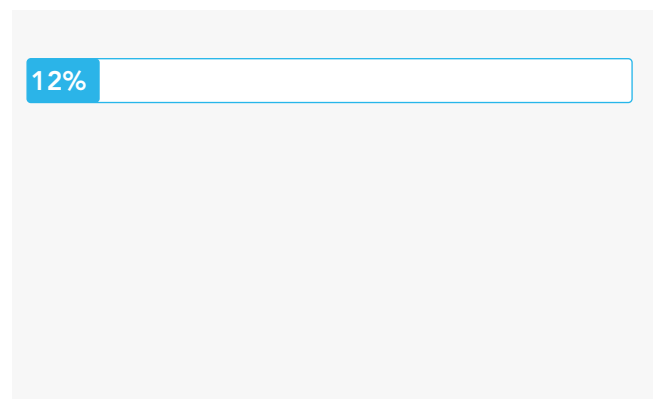
### lokalisatie



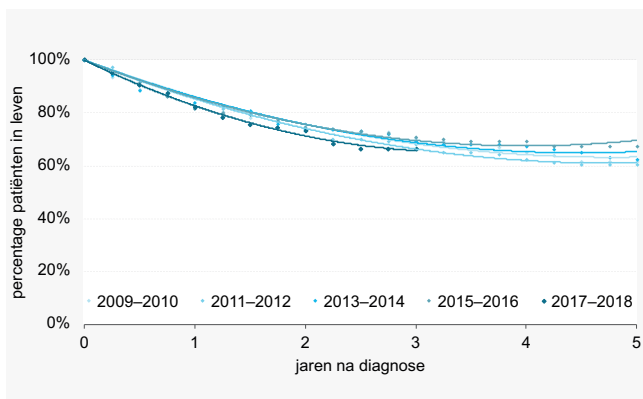
### leeftijdsverdeling per geslacht



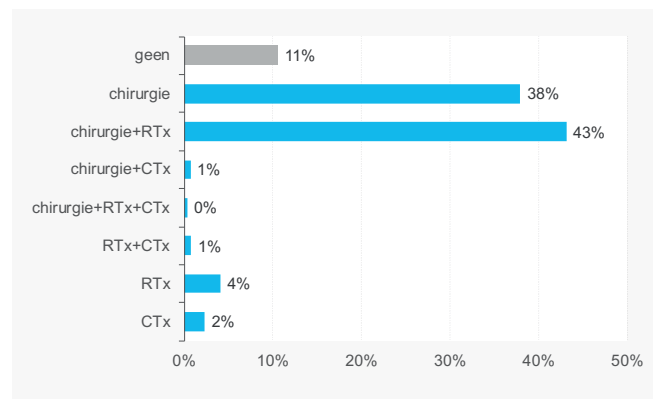
### uitgezaaide ziekte bij diagnose



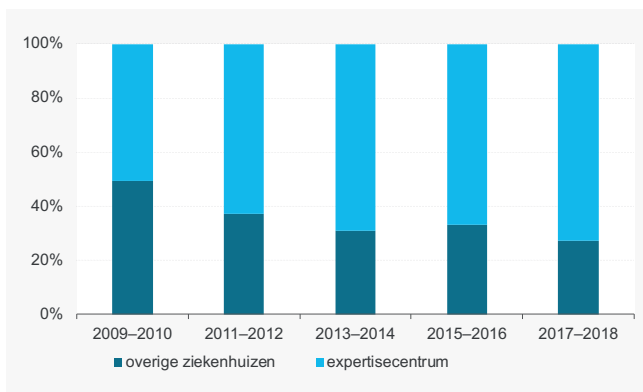
### overleving



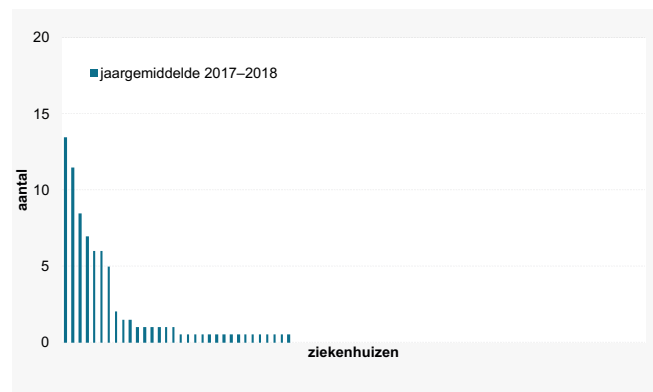
### primaire behandeling



### operatie in expertisecentrum

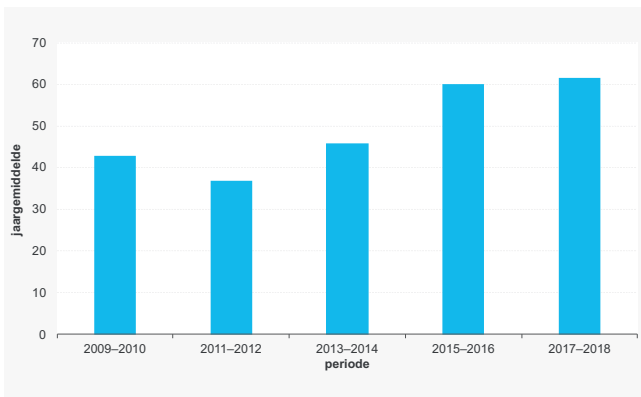


### chirurgie per ziekenhuis

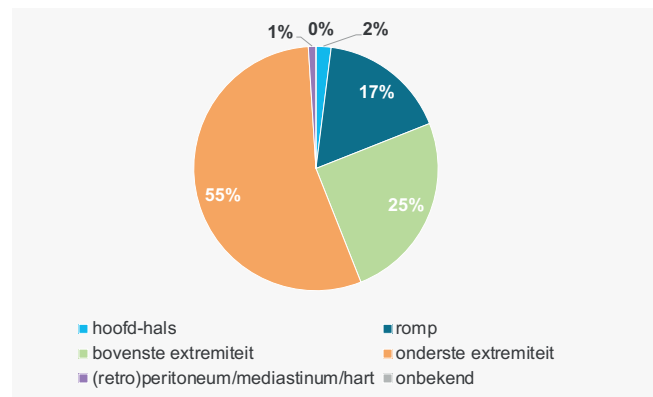


## HOOGGRADIG MYXOFIBROSARCOOM

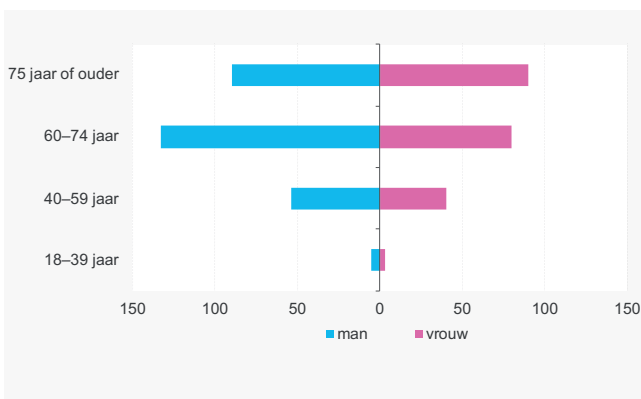
### nieuwe diagnoses



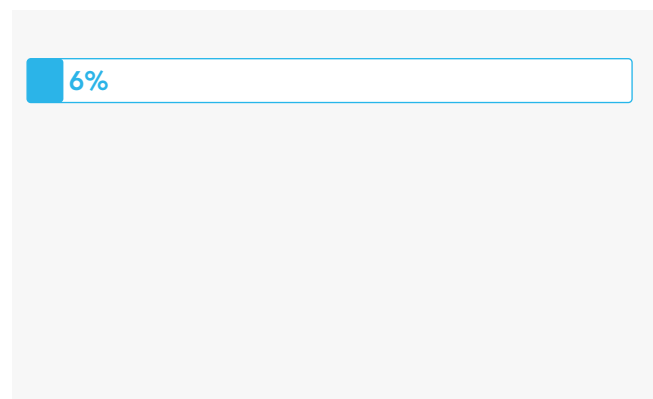
### lokalisatie



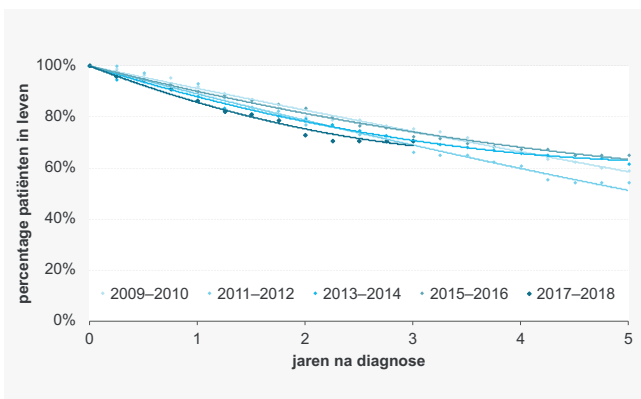
### leeftijdsverdeling per geslacht



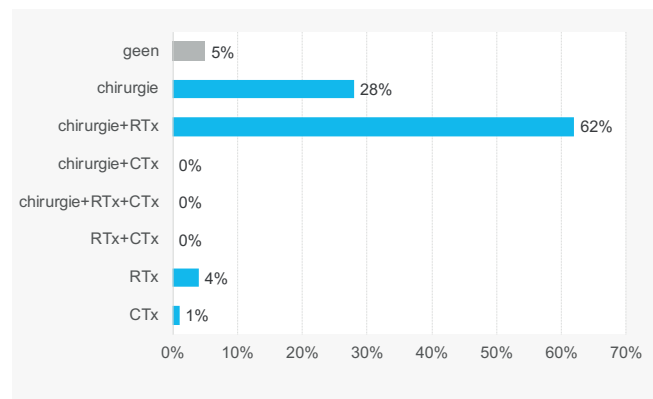
### uitgezaaide ziekte bij diagnose



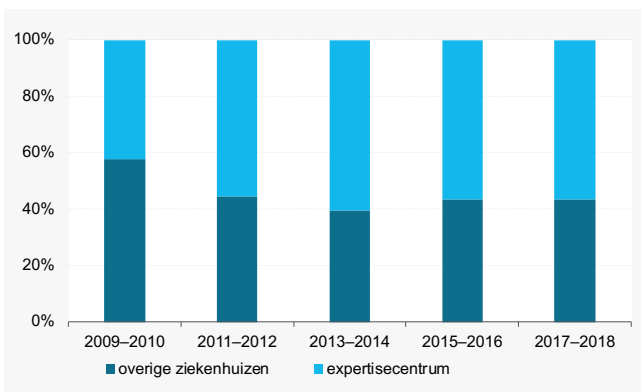
### overleving



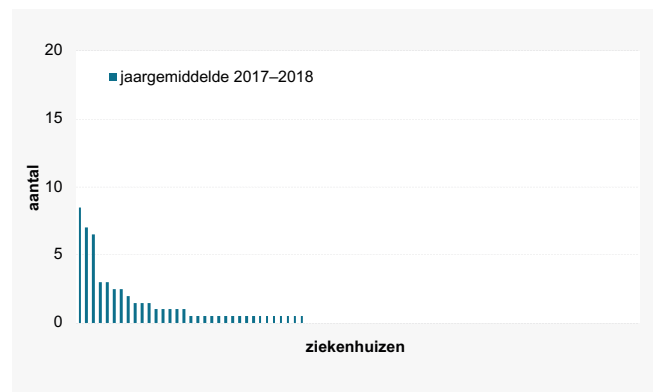
### primaire behandeling



### operatie in expertisecentrum

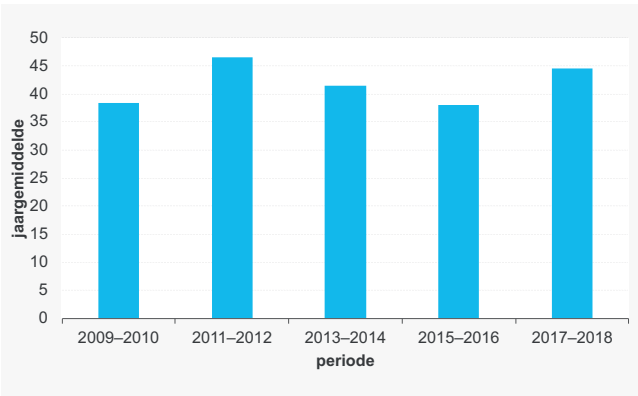


### chirurgie per ziekenhuis

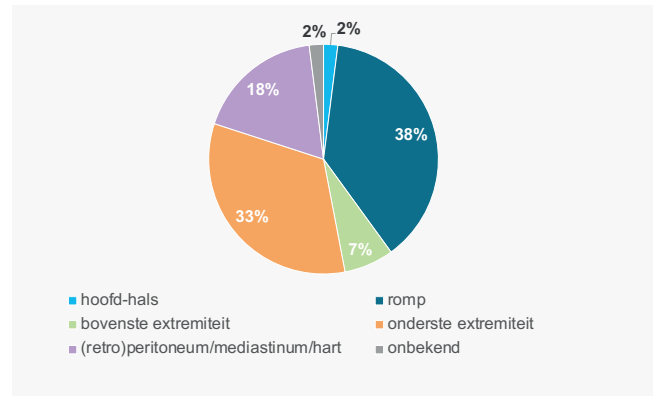


## HOOGGRADIG LEIOMYOSARCOOM

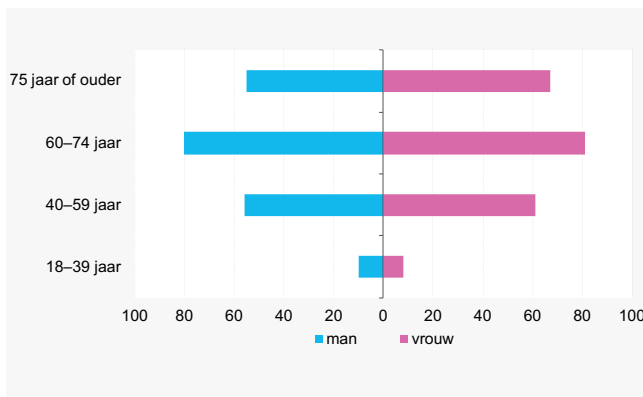
### nieuwe diagnoses



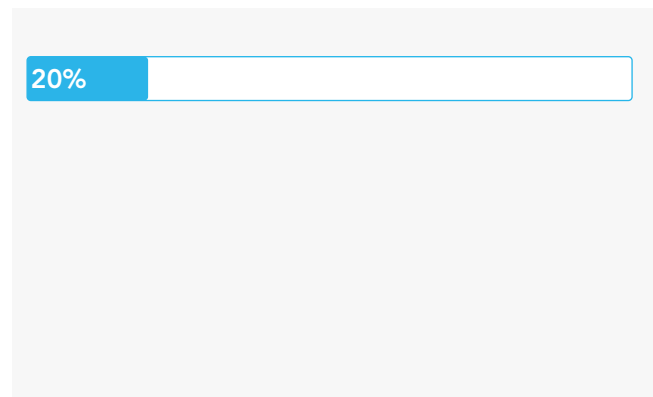
### lokalisatie



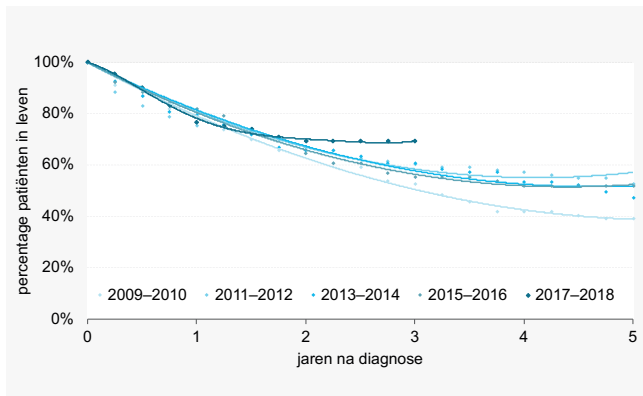
### leeftijdsverdeling per geslacht



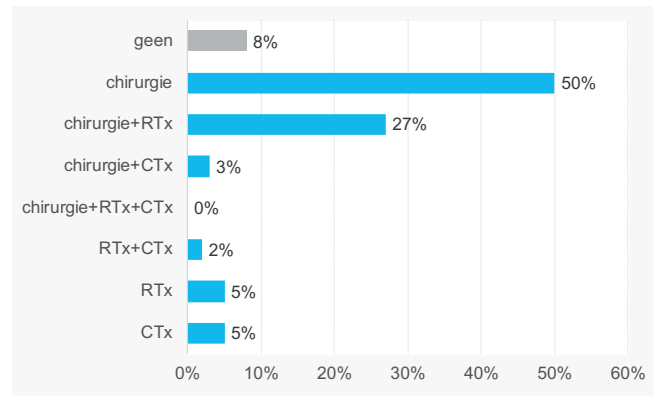
### uitgezaaide ziekte bij diagnose



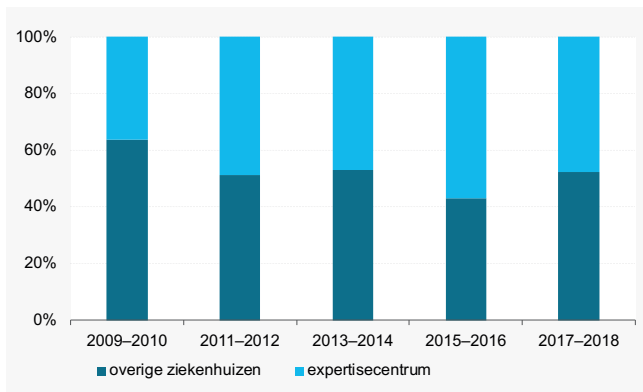
### overleving



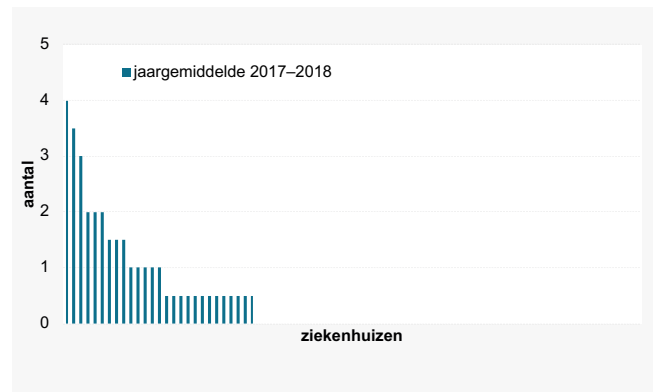
### primaire behandeling



### operatie in expertisecentrum

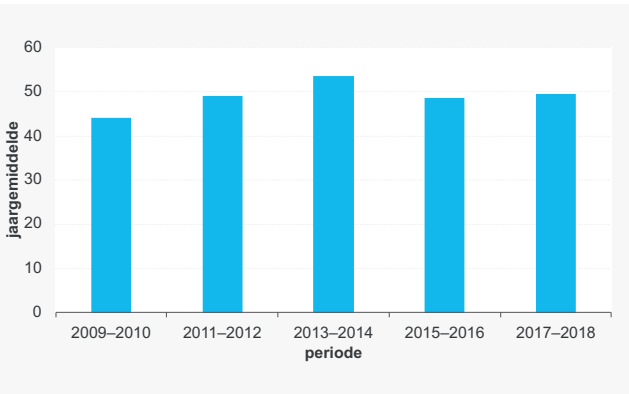


### chirurgie per ziekenhuis

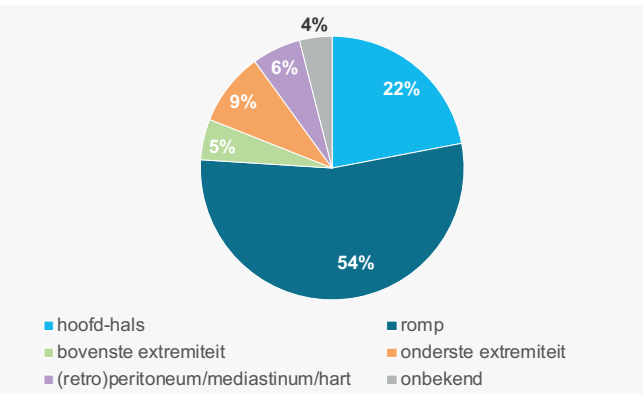


## ANGIOSARCOOM

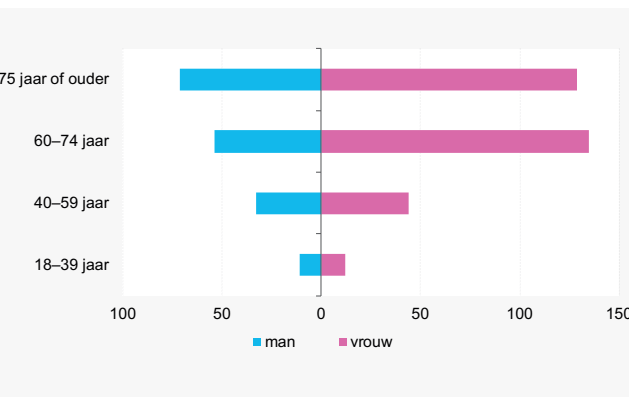
### nieuwe diagnoses



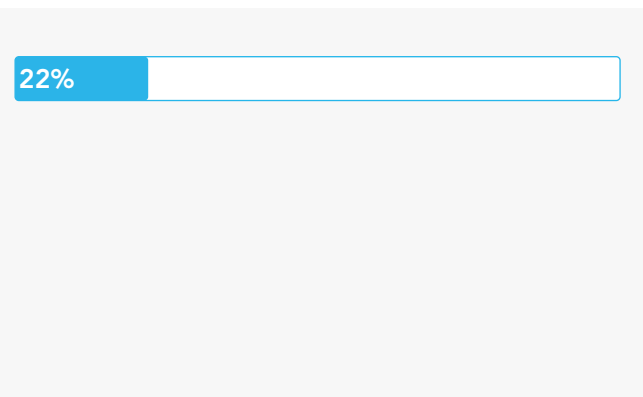
### lokalisatie



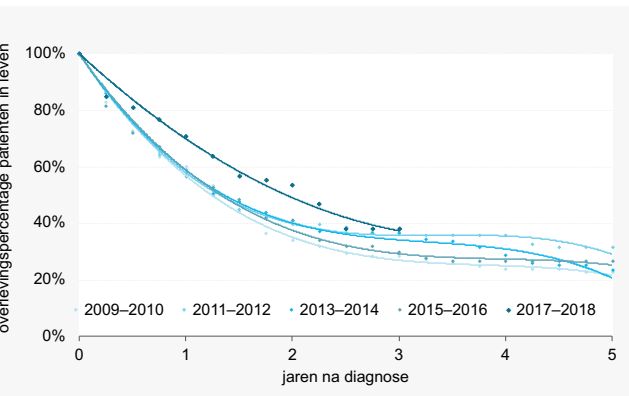
### leeftijdverdeling per geslacht



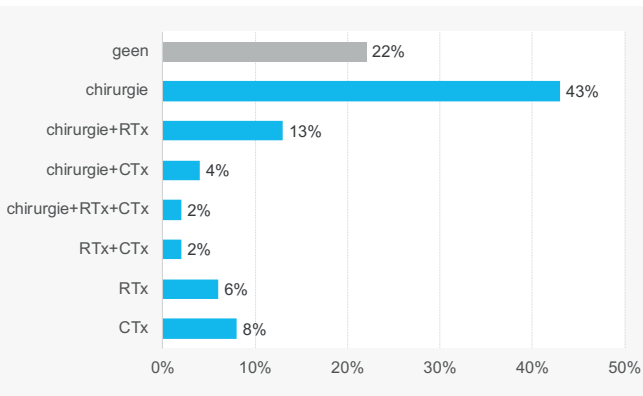
### uitgezaaide ziekte bij diagnose



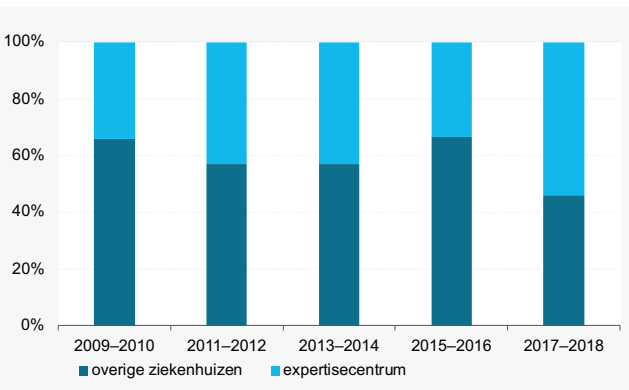
### overleving



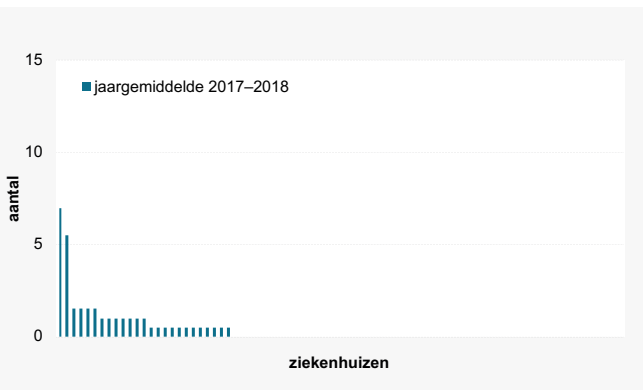
### primaire behandeling



### operatie in expertisecentrum

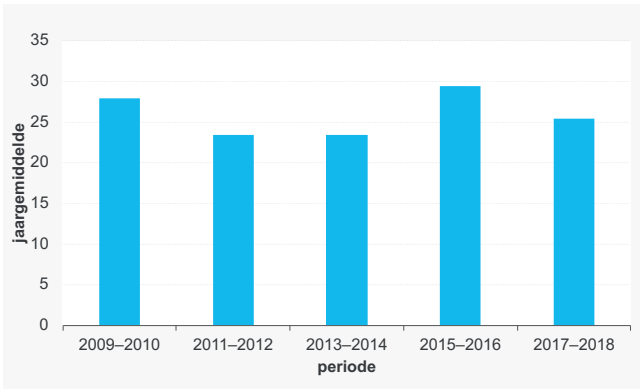


### chirurgie per ziekenhuis

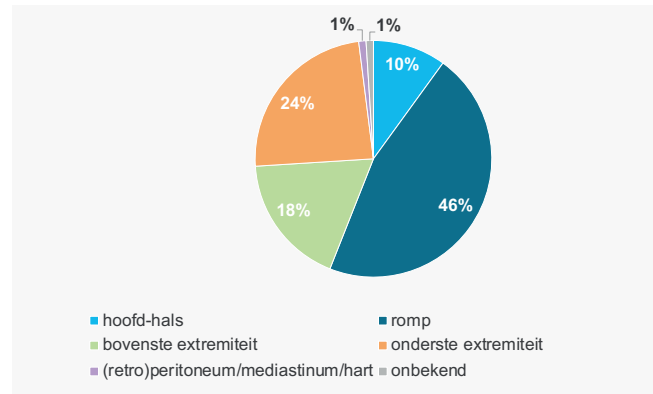


## MALIGNE PERIFERE ZENUWSCHEDETUMOR (MPNST)

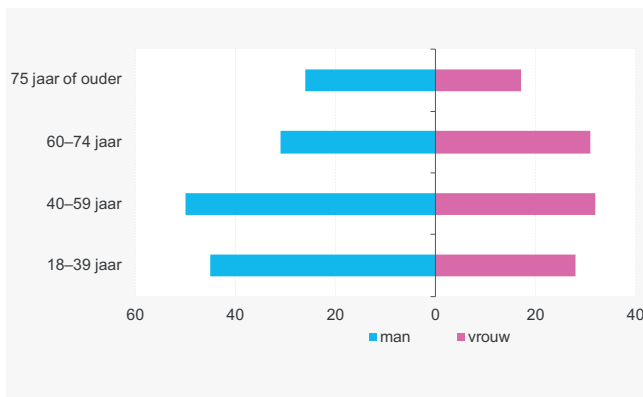
### nieuwe diagnoses



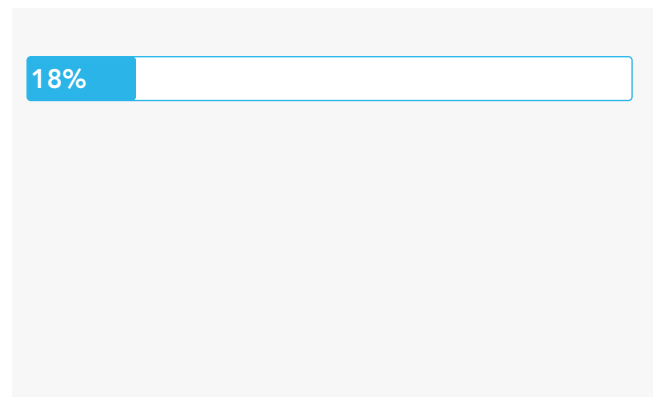
### lokalisatie



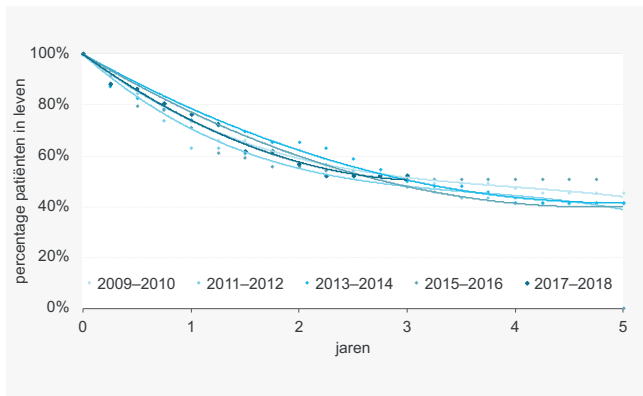
### leeftijdsverdeling per geslacht



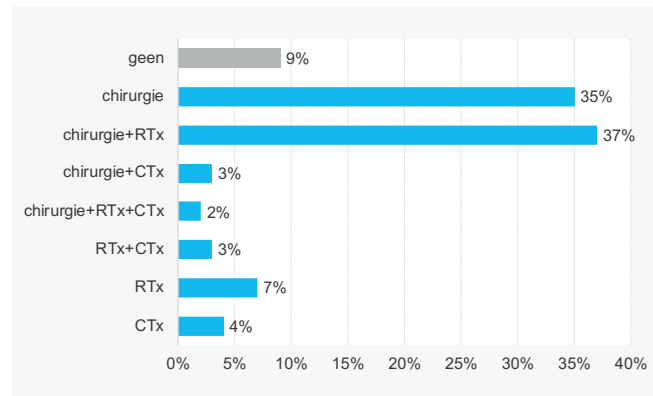
### uitgezaaide ziekte bij diagnose



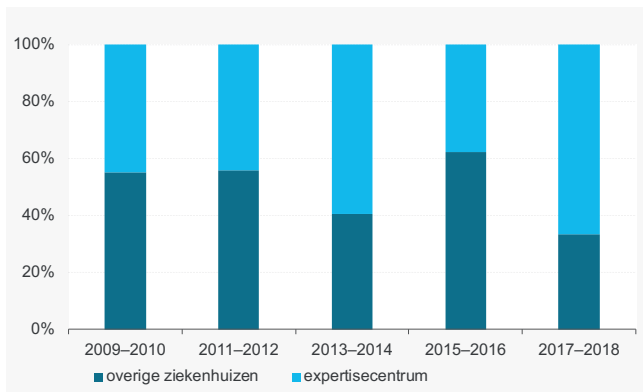
### overleving



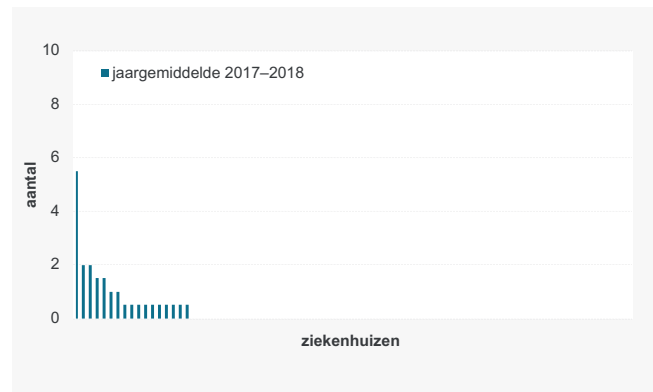
### primaire behandeling



### operatie in expertisecentrum



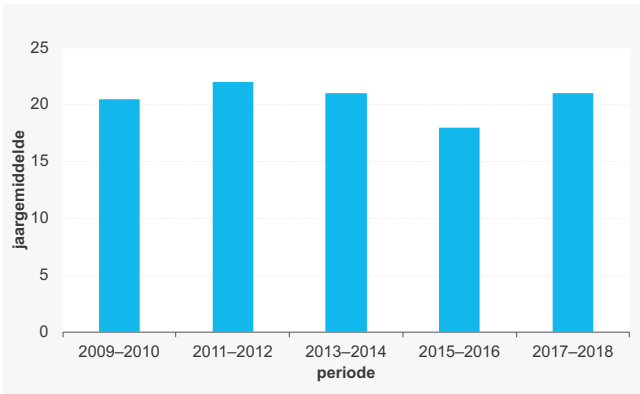
### chirurgie per ziekenhuis



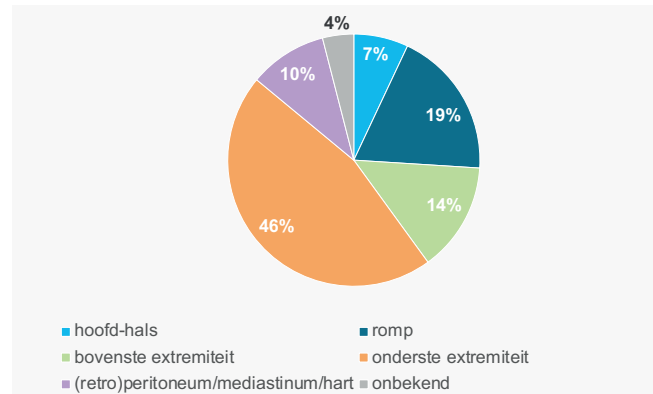


## SYNOVIOSARCOOM

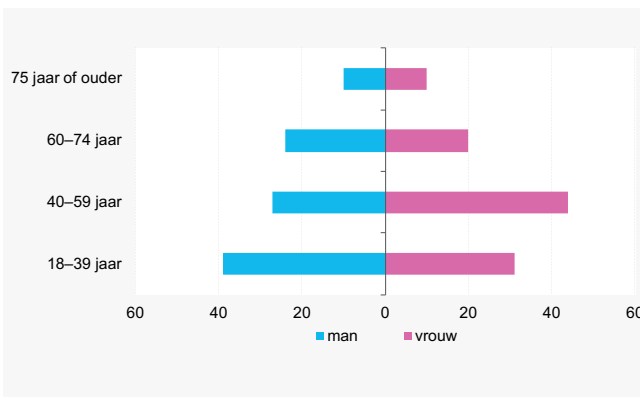
### nieuwe diagnoses



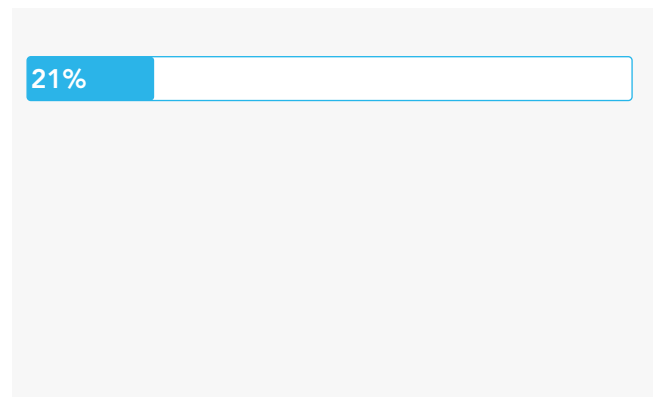
### lokalisatie



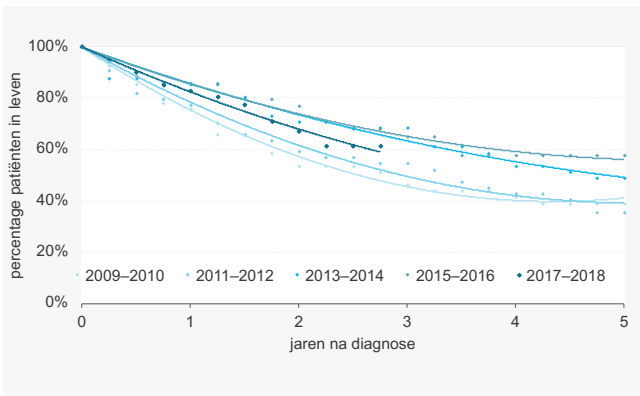
### leeftijdsverdeling per geslacht



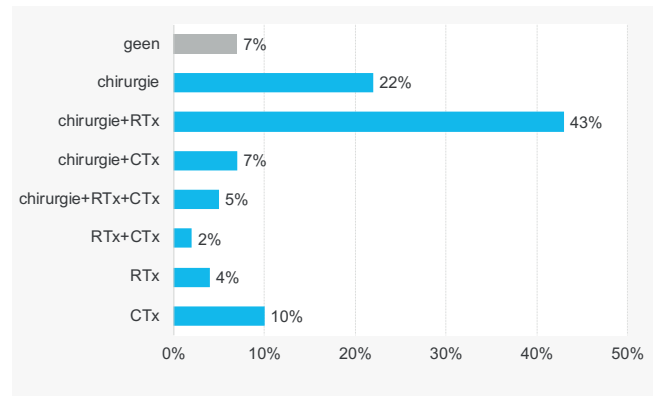
### uitgezaaide ziekte bij diagnose



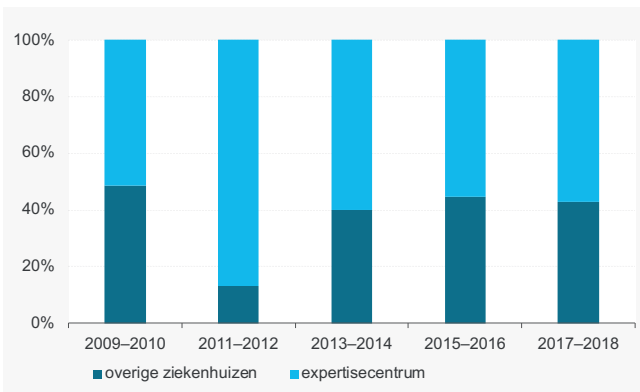
### overleving



### primaire behandeling



### operatie in expertisecentrum

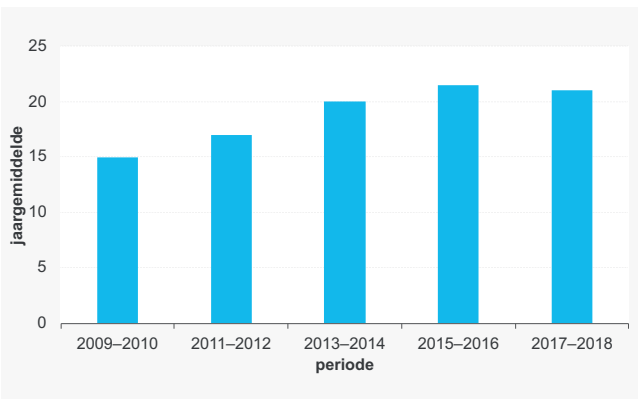


### chirurgie per ziekenhuis

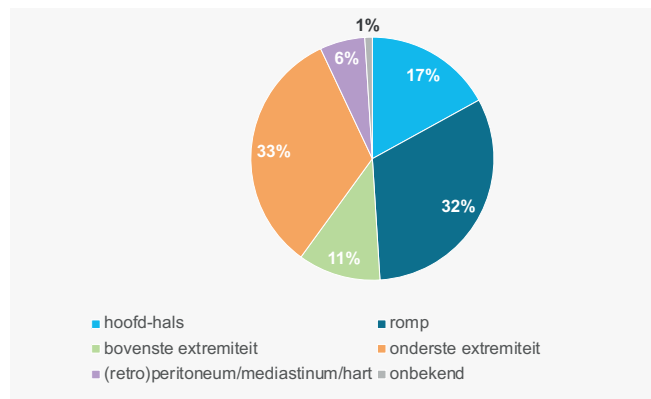


## SPOELCELSARCOOM

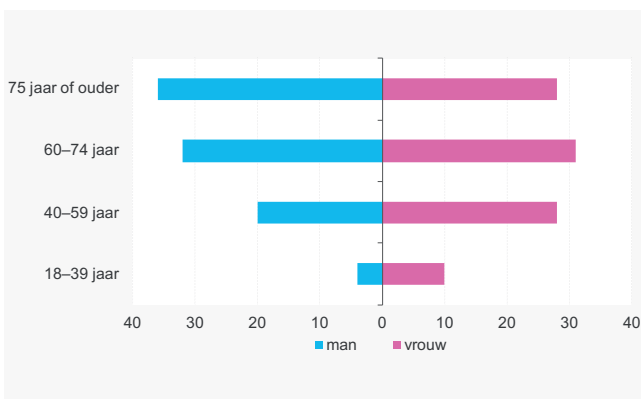
### nieuwe diagnoses



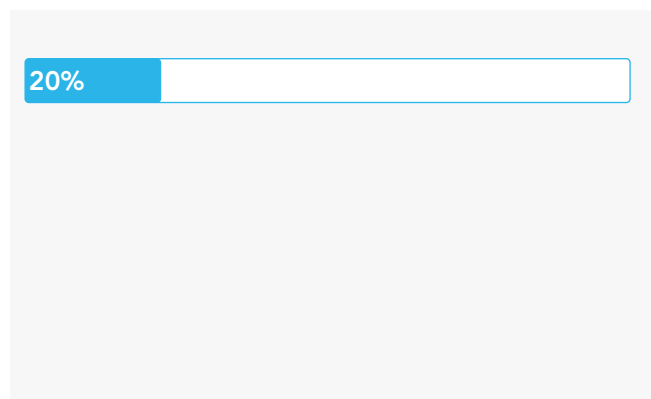
### lokalisatie



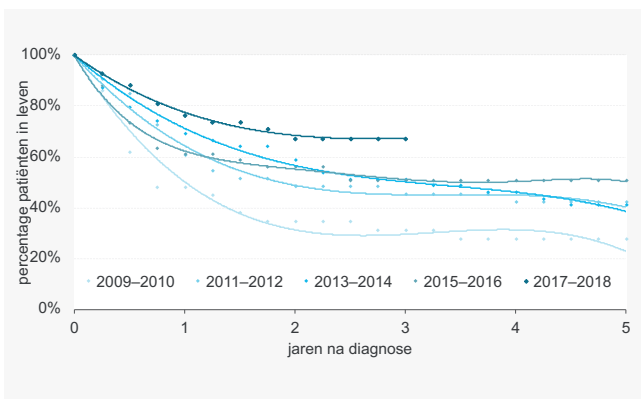
### leeftijdsverdeling per geslacht



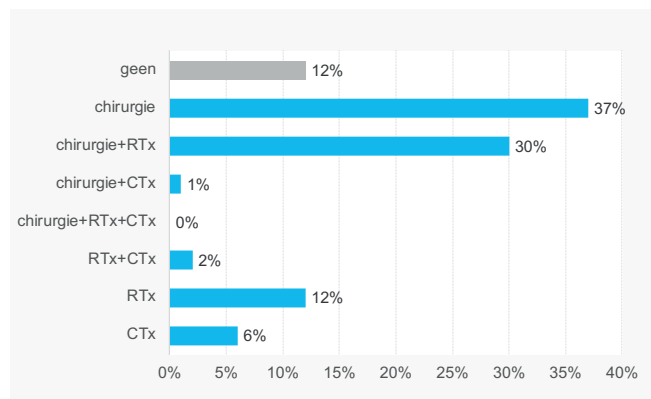
### uitgezaaide ziekte bij diagnose



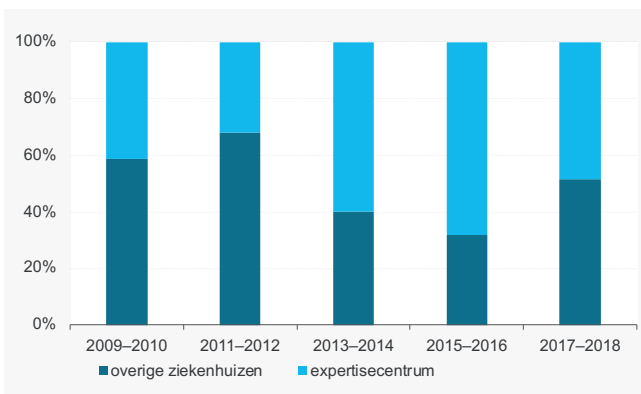
### overleving



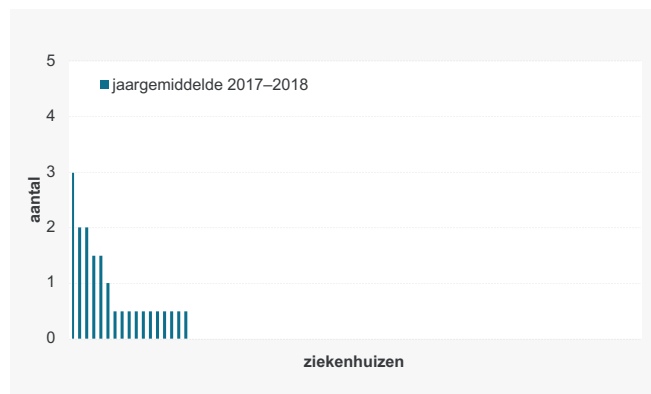
### primaire behandeling



### operatie in expertisecentrum

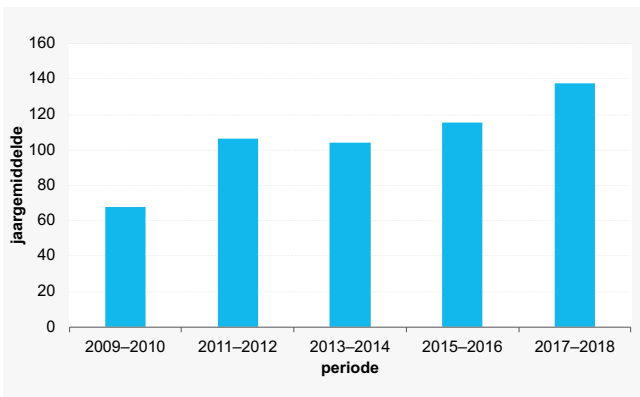


### chirurgie per ziekenhuis

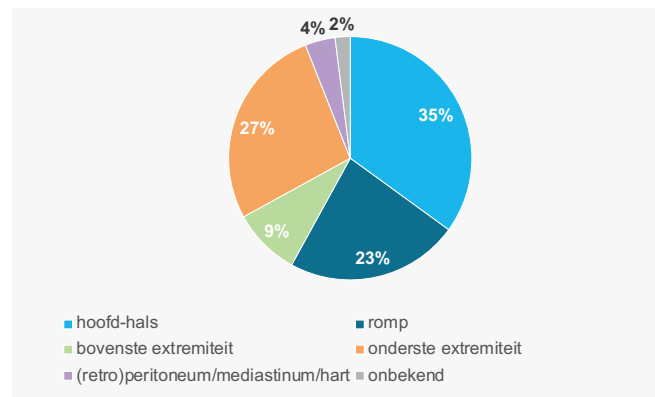


## ONGEDIFFERENTIEERD PLEOMORF SARCOOM / NIET NADER OMSCHREVEN SARCOOM

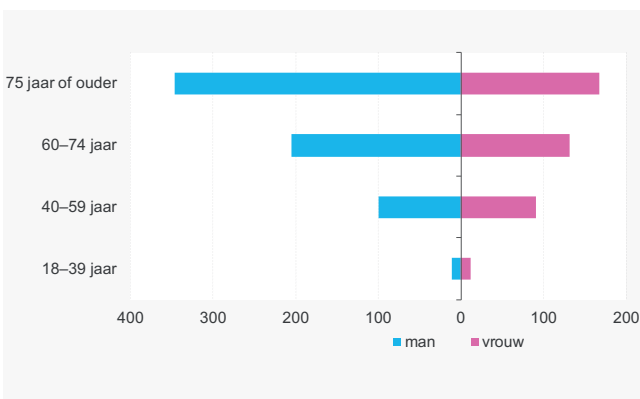
### nieuwe diagnoses



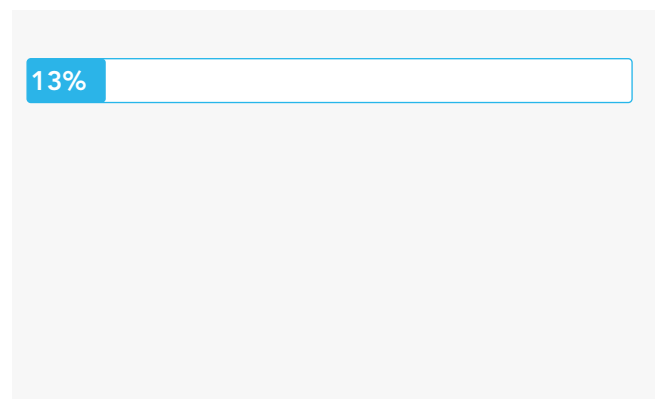
### lokalisatie



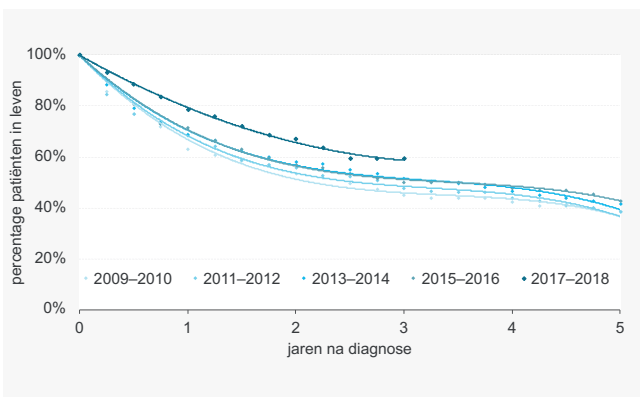
### leeftijdsverdeling per geslacht



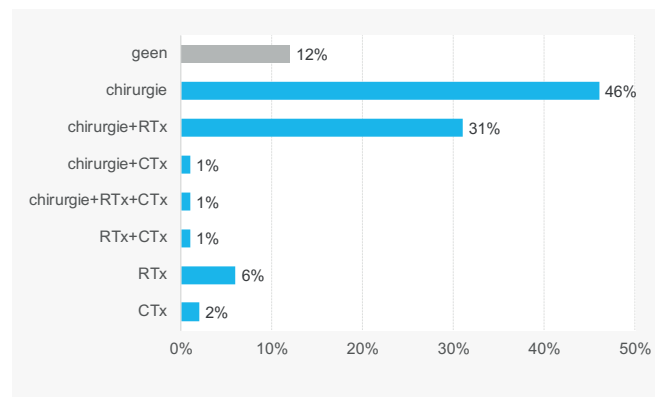
### uitgezaaide ziekte bij diagnose



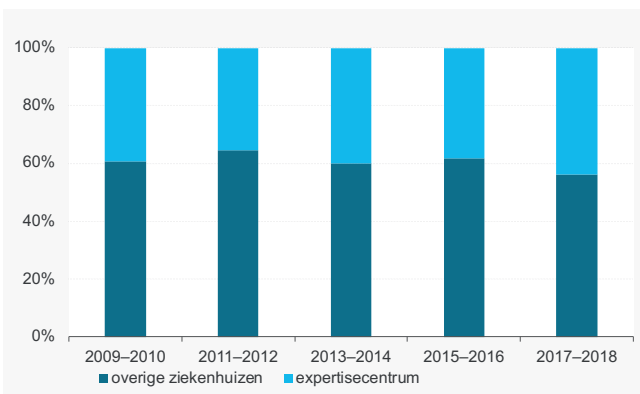
### overleving



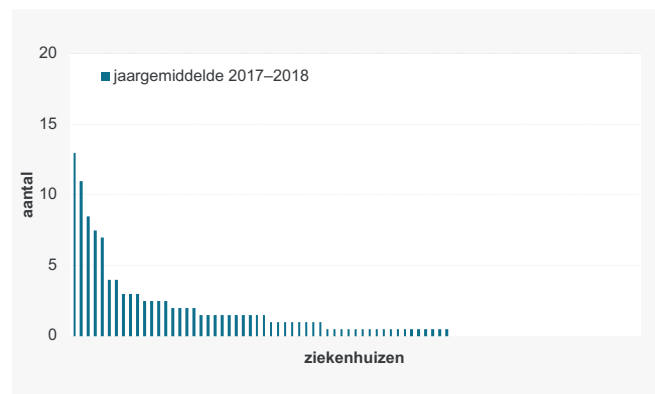
### primaire behandeling



### operatie in expertisecentrum

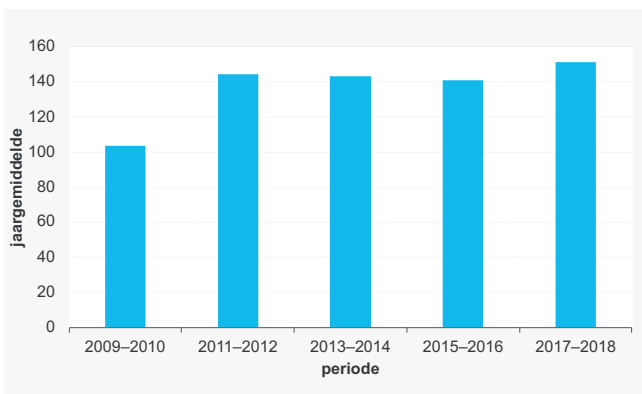


### chirurgie per ziekenhuis

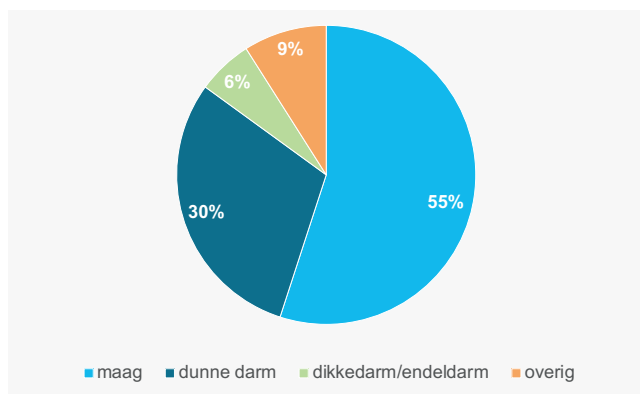


## HOOGRISICO-GIST

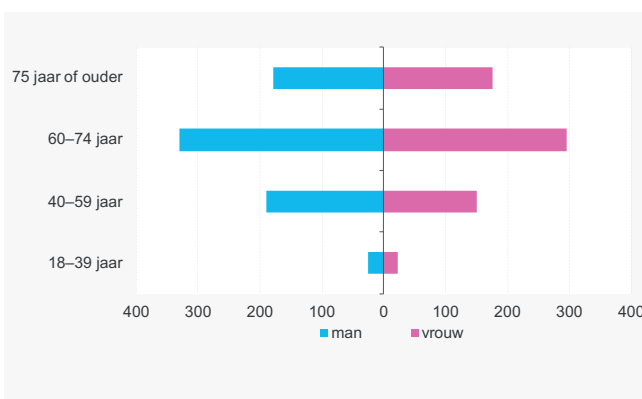
### nieuwe diagnoses



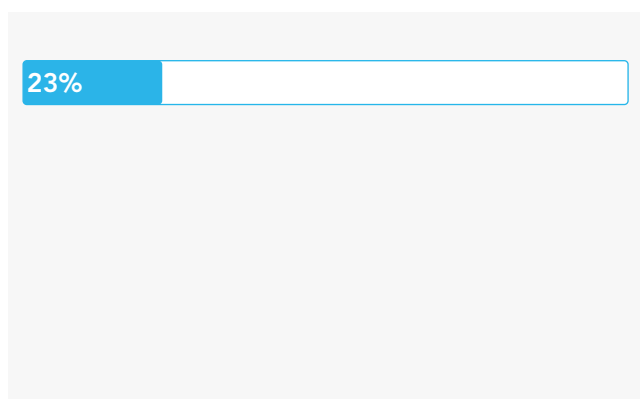
### lokalisatie



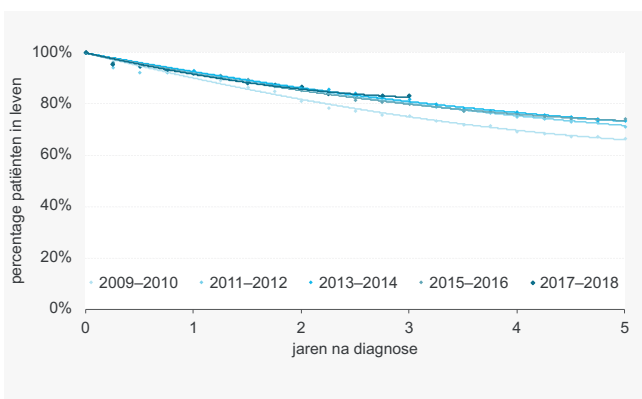
### leeftijdsverdeling per geslacht



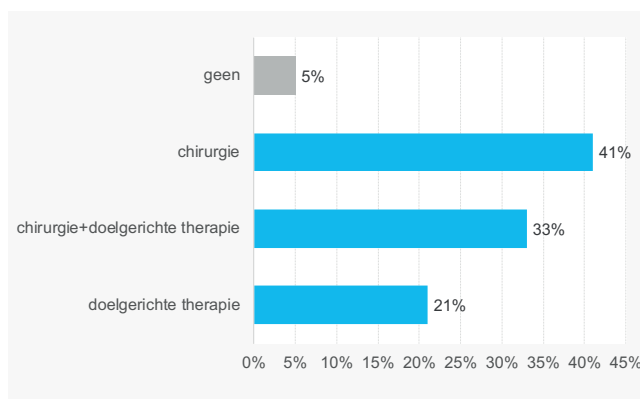
### uitgezaaide ziekte bij diagnose



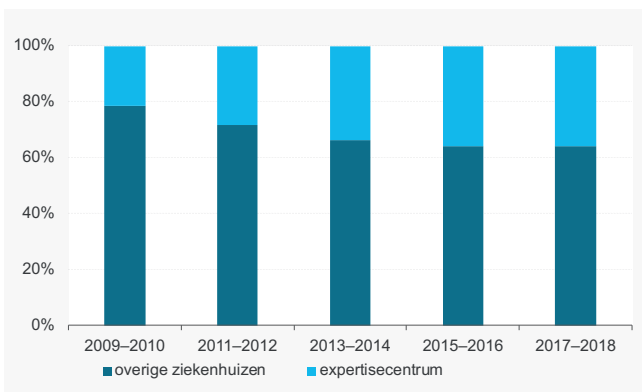
### overleving



### primaire behandeling



### operatie in expertisecentrum



### chirurgie per ziekenhuis

